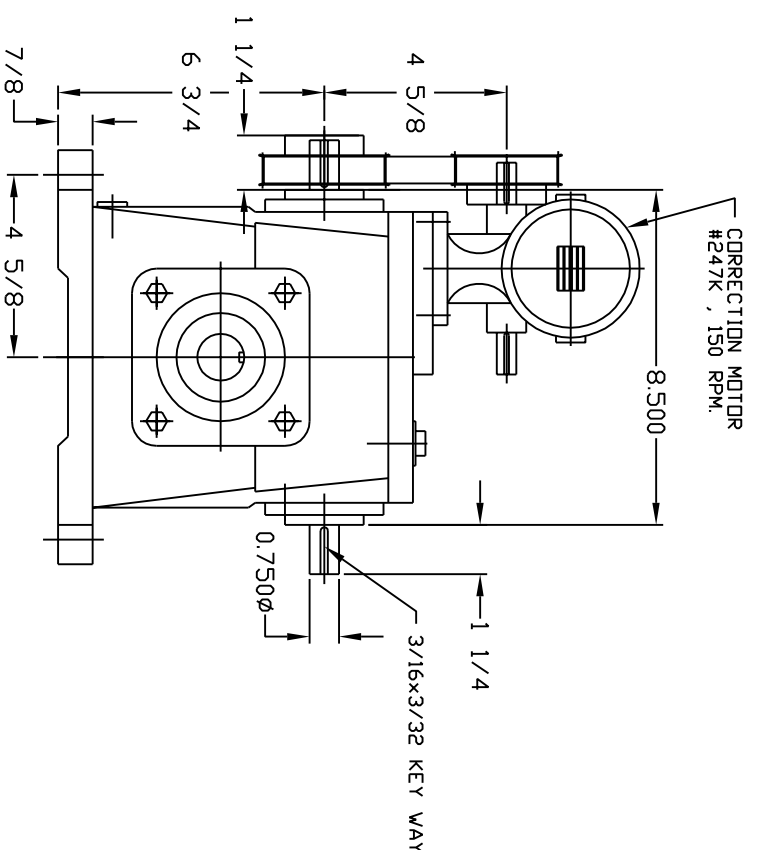
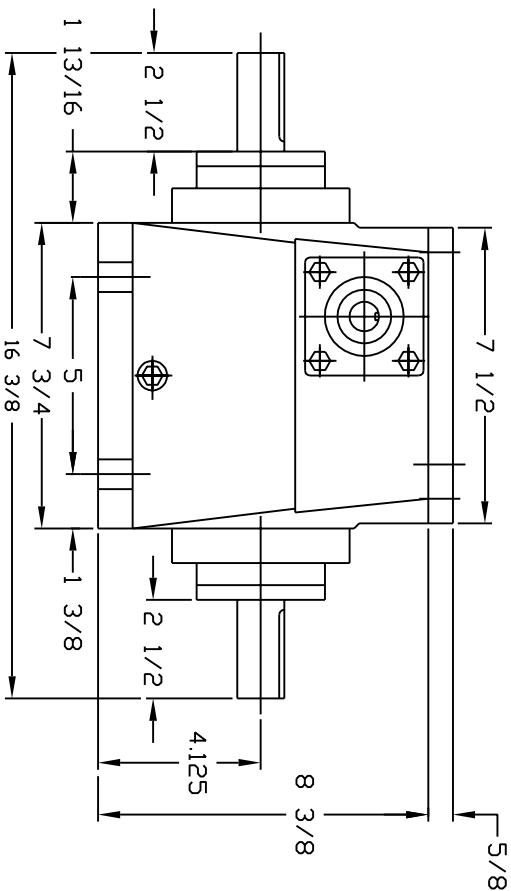
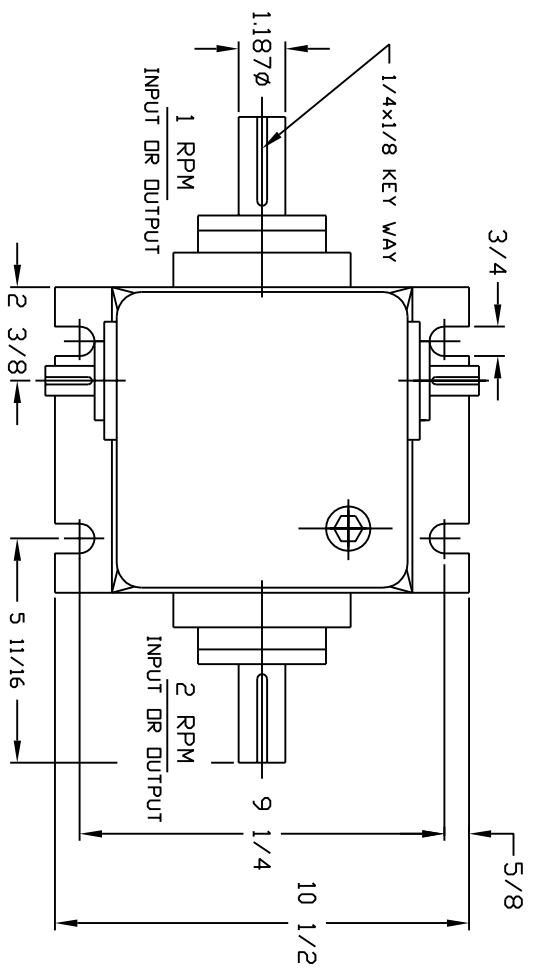
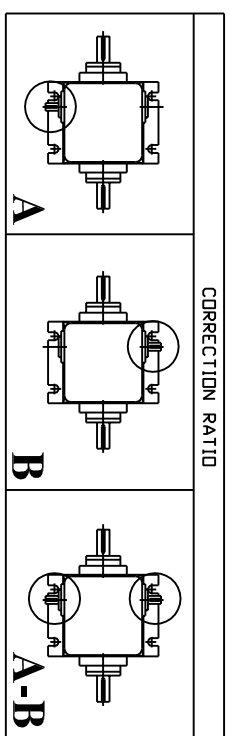


CORRECTION RATIO					
MODEL	# OF TURNS CORR. SHAFT	EFFECT ON 1 RPM SHAFT	# OF DEG./TURN	EFFECT ON 2 RPM SHAFT	# OF DEG./TURN
ILD-4 20:1 RATIO	20	180 DEG.	9 DEG.	360 DEG.	18 DEG.
ILD-4 40:1 RATIO	20	90 DEG.	4 1/2 DEG.	180 DEG.	9 DEG.



- NOTES:**
- Main shaft rotate 2:1 ratio in same direction
  - Input to either shaft clockwise or counter clockwise
  - Horsepower - 4 H.P. @ 300 RPM @ input high speed shaft.
  - Max. input speed - 600 rpm
  - Oil capacity: 1 QTS. Mobil Gear# 629
  - Weight : 48 LBS. without correction motor  
60 LBS. with correction motor



<b>FMP</b>		SCALE:	TITLE:	IN-LINEDIFFERENTIAL	ILD-4	REV:
TOL EXCEPT AS NOTED		CAD#	FINISH:			DRAWN: D.K.
+/- .005	+/- 1/64	+/- 1/2	DATE:	MAT'L:	2/2/07	DR# D-395A
						APR: